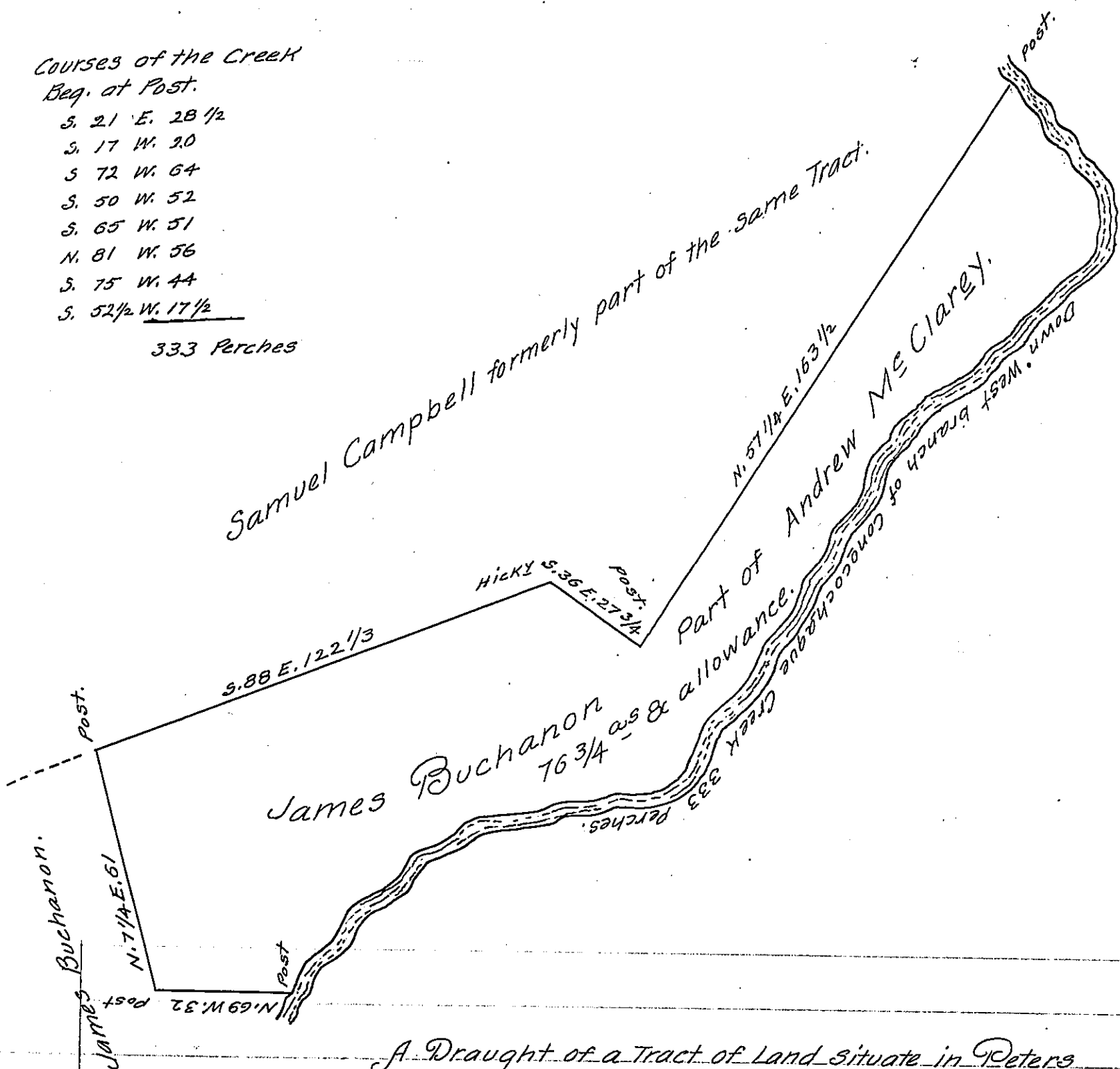


Courses of the Creek
Beg. at Post.

- S. 21 E. 28 1/2
- S. 17 W. 20
- S. 72 W. 64
- S. 50 W. 52
- S. 65 W. 51
- N. 81 W. 56
- S. 75 W. 44
- S. 52 1/2 W. 17 1/2

333 Perches



A Draught of a Tract of Land situate in Peters Township Franklin County Containing Seventy six acres and three fourths and the usual allowance of Six P. Cent for Roads &c. being part of a larger tract which was Surveyed in pursuance of a Warrant granted Andrew McClary Dated August 2nd 1738 Resurveyed and laid off from the other part of said Tract for James Buchanan Feb^y 19th 1810.

Thomas Poe, D. S.

To Andrew Porter Esq^r
Surveyor General of Penn^a

IN TESTIMONY that the above is a copy of the original remaining on file in the Department of Internal Affairs of Pennsylvania, made conformably to an Act of Assembly approved the 16th day of February, 1833, I have hereunto set my Hand and caused the Seal of said Department to be affixed at Harrisburg, this eleventh day of January 1906.

Leaac R. ...
Secretary of Internal Affairs.